

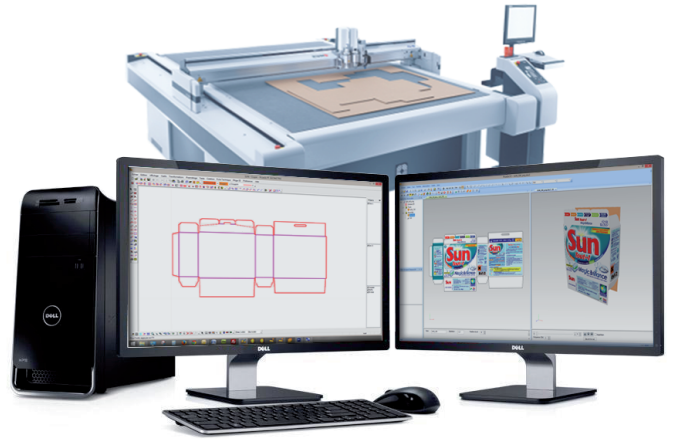


PICador

The CAD software for packaging design

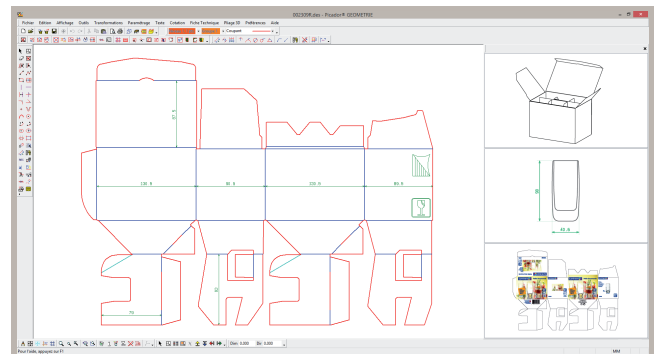
2D

- **Structural design**
- Specific drawing tools for packaging & Display
- **Import/export (cf2, dxf, ai, eps, pdf)**
- Layout / Step and repeat
- Parametric design



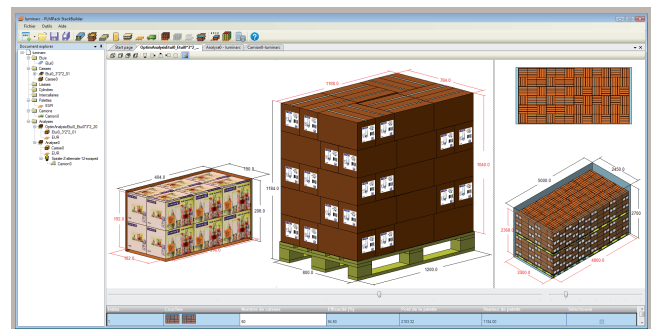
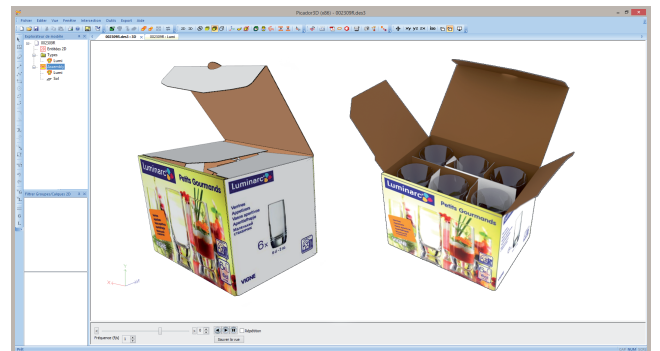
Cutting

- **Manage all the Cutting tables**
(ZUND, ARISTO, KONGSBERG, LASERCOMB, SEI, WILD, GRAPHTEC, SUMMAGRAPH, iECHO, ELCEDE, MIMAKI, ...)
- **Prototyping and small series productions**
- Tools settings according to the used material
- Automatic optimization of tools path



3D

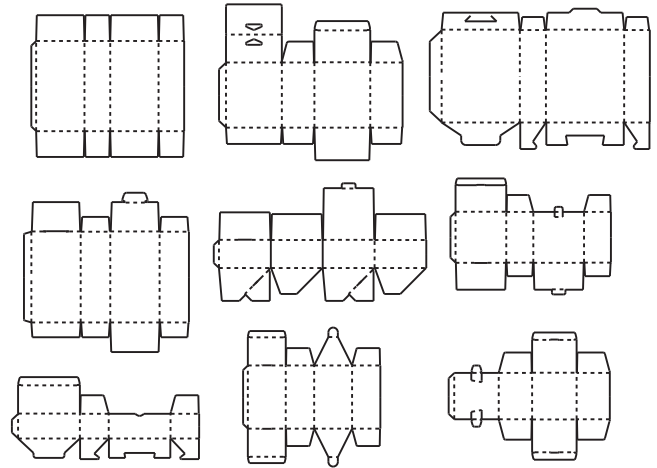
- Automatic **2D / 3D folding**
- Folding / Unfolding 3D Animation
- **Printing Files or Texture Positioning**
- 3D animated assembly
- Creation of Interactive and **Animated 3D PDF**
- Create visual user instructions
- Import of CAD objects and 3D textured model
- Augmented reality View of 3D models



Database

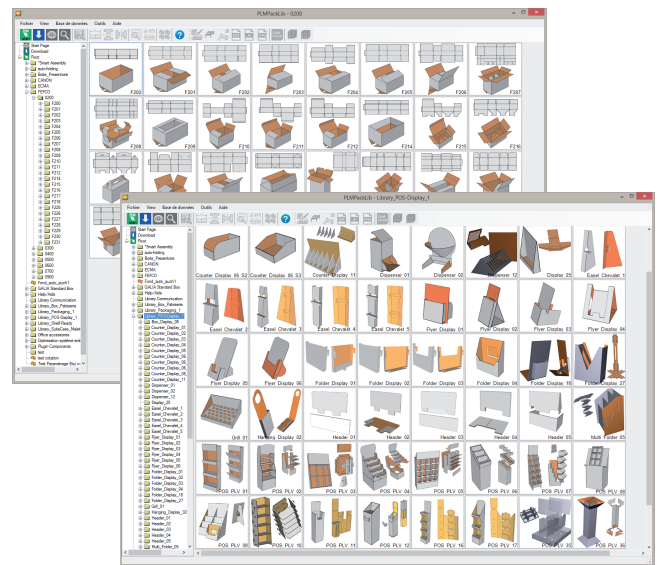
- **Packaging Standards libraries (ECMA, FEFCO...)**
- Specific packagings and **POS libraries**
- Automatic **thickness management**
- 3D folding animation
- Download new library and access to tutorials
- Export to Adobe Illustrator, PDF, Picador...
- Optimize (**Layout, Case-filling, Palletizing**)
- Create your own parametrical models in PICADOR
- Synchronise the database on your network

Infinity of possibilities



Eco-design

- **Filling cartons/case, palletizing, truck loa-**
- Optimal case calcul
- Material choice assistance
- Strength analysis
- **Automatic analysis report**



PICADOR - CALCUL RCV v2.0

UNITES: Metric English

CAISSE: Type: Caisse Américaine, Poids Total: 15.00 Kg

ENVIRONNEMENT: Taux d'humidité: 76-85%, Durée Stockage: 1-3 ans, Surface Imprimée: Simple

PALETTISATION: Palette: Europallet 1200 x 800, Poids: 25.00 Kg

CARTON: Qualité: BC_275Grade-976 g/m2, Epaisseur: 6.92 mm, Rigidité Dx: 40.38 N/m, Rigidité Dy: 23.65 N/m

ECT: 10.07 kN/m

Calculer Tous Cartons: même profil, tier, 10 premiers, Rapport Complet

CAISSE: dim. ext.: 400.1 x 300.0 x 199.9 mm, Poids: 15.00 Kg
 type: Caisse Américaine
 PALETTE: dim.: 1199.9 x 800.0 x 145.0 mm, Poids: 25.00 Kg
 type: Europallet 1200 x 800

TOTAL: poids = 76.0 Kg, hauteur = 1544.3 mm, nb Couches = 7, nb Caisnes = 49

Qualité Carton	Profil	RCV	Stat.(dA)	RCV	Dyn.(dA)	Palet
01 BC_350Grade-1137 g/m2	745.1	365.1	365.1	2.5		
02 BC_275Grade-976 g/m2	657.4	322.1	322.1	2.1		
03 BC_275Grade-1022 g/m2	616.1	301.9	301.9	2.0		
04 BC_275Grade-974 g/m2	604.7	296.9	296.9	1.9		
05 BC_350Grade-1027 g/m2	601.5	294.7	294.7	1.9		
06 BC_275Grade-776 g/m2	589.9	288.6	288.6	1.8		
07 BC_275Grade-923 g/m2	519.8	264.9	264.9	1.6		
08 BC_200Grade-530 g/m2	504.9	247.4	247.4	1.4		

Watch our videos

